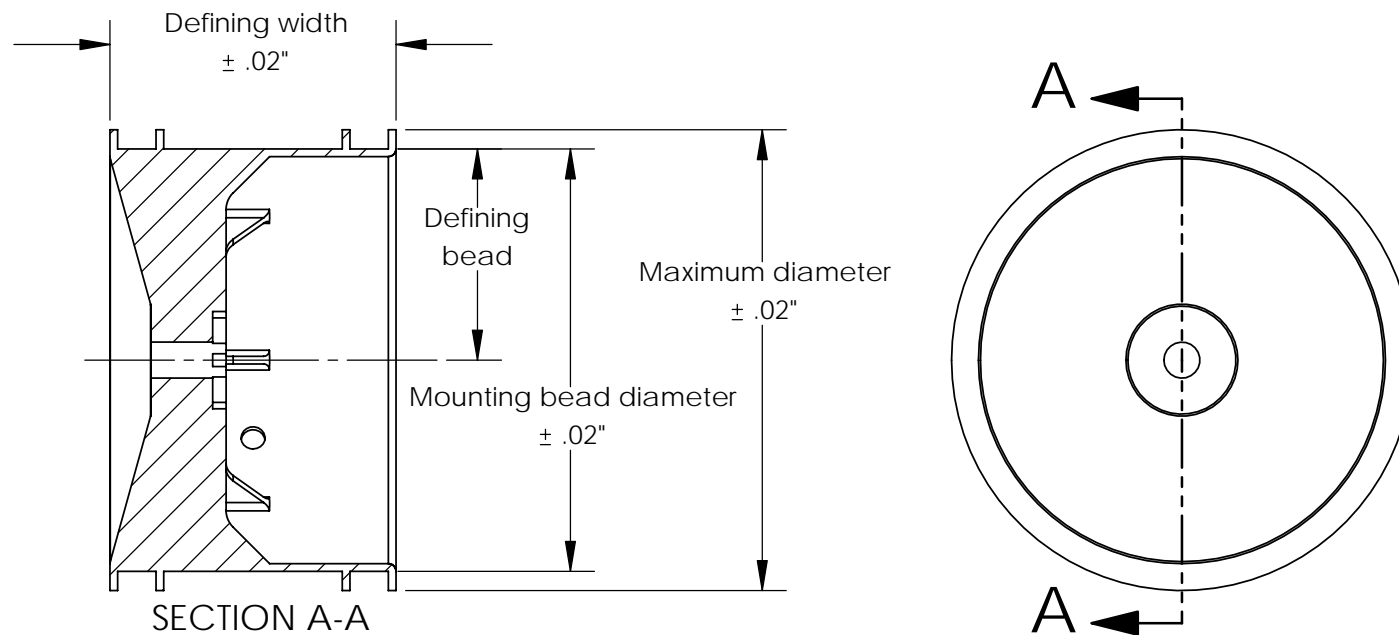


Typical industry standard construction - 1/10th and 1/8th truck off-road wheel



Defining words -

- The mounting bead diameter is defined as the functional adhesion point where the tire and wheel meet. If a particular wheel style has multiple heights on the outer diameter the mounting bead is always the one closest to the center of the wheel.
- The maximum diameter is defined as the largest diameter allowed on the wheel. These "ribs" are intended to center the tire during the mounting process and create a channel for the adhesive material to rest in a confined space.
- The width of the wheel is defined at the functional edge to edge dimension which constitutes the structure for tire mounting. For appearance purposes the wheel face is allowed to protrude past the edge to edge dimension as long as it does not exceed the maximum allowed width of the tire or extend passed the sidewall of the tire. Wheel face protrusions should not contain any geometry or potential relative mounting features which would enable a tire to extend further or connect to the wheel intended for enhanced performance.
- The tolerance is indicated in the diagram at plus or minus .02".